

# Cross-Border Cooperation in Slovak-Czech Border Region

---

Eva Rajčáková, Angelika Švecová

Comenius University, Bratislava,  
Faculty of Natural Sciences

Department of Regional Geography, Protection and Planning of  
Landscape

[rajcakova@fns.uniba.sk](mailto:rajcakova@fns.uniba.sk), [asvecova@fns.uniba.sk](mailto:asvecova@fns.uniba.sk)



# Objective

---

- The aim of the contribution is to point out cross-border cooperation in Slovak-Czech border region of two aspects:
  - Introduce to CBC in Slovakia in Programme documents of the period 2007-2013 (priority axis and measures in OP CBC CZ-SK, results of implementation of OP)
  - Present results of the research, which was realised in Trenčín Self-governing region. The research was focused on evaluation of preconditions and potential of municipalities for CBC in programming period 2004-2006.

# Cross border cooperation (CBC)

---

CBC is regional and local cooperation among bodies lower than governmental level on the both sides of state border, which helps to promote peace, freedom, security and safeguarding of human rights and encourages the protection of ethnic and national minorities and leads to the development of cross-border regions (*European Charter of Border and Cross-border Regions, 1995*)

CB relations represent a complex of all processes that are a result of the dependence of a territory from one side of the state border on the potential of a territory from the other border side (*Halás, 2002*)

# CBC in Slovakia

---

- ❑ Up to 1989 - cross border cooperation didn't exist in Slovakia
- ❑ After 1989 – activities of euro regional structures, local and regional activities of type „bottom-up“
- ❑ New period – after 1998
  - support of municipalities, actors and partners of CBC
  - legislative, programmed and financial support for programmes (Phare CBC, Interreg) and projects
- ❑ Programming period 2007-2013 - CBS is supported from the 3rd target of Cohesion policy – European territorial cooperation (ERDF)

# Operational Programmes of CBC 2007-2013 in Slovakia

---

Programmes of CBC	Fund	EU Contribution (EUR)	Managing Authority (Joint Technical Secretariat)
SR - CZ	ERDF	92 740 141	Slovakia
SR - AT	ERDF	59 906 355	Austria
SR - PL	ERDF	157 407 763	Poland
SR - HU	ERDF	176 496 479	Hungary
SR - HU - RO - UA	ERDF	68 640 123	Hungary
<b>Total</b>	<b>ERDF</b>	<b>393 810 597</b>	-

# Priority axis and measures of OP Programme CBC SK – CZ

Priority axis	Measures
<b>1. Support of Social-Cultural and Economic Development of Cross-Border Region and Cooperation</b>	1.1 Cultural development and preservation of traditions
	1.2 Cooperation and networking
	1.3 Education, labour market and employment
	1.4 Development of entrepreneurial and innovation environments
	1.5 Development of cross-border tourism
	1.6 Fund of micro-projects
<b>2. Development of Accessibility of the Cross-Border Territory and Environment</b>	2.1 Development of transport infrastructure and accessibility of border regions
	2.2 Environmental conservation and development of the country
	2.3 Improving information and communication accessibility of border regions
<b>3. Technical assistance</b>	

# Project applications according address of lead partner

---

Address of lead partner	I. Call	II. Call	III. Call	Total
Czech Republic	166	56	55	<b>277</b>
Slovak Republic	83	81	96	<b>260</b>
<b>Total</b>	<b>249</b>	<b>137</b>	<b>151</b>	<b>537</b>

# Implementation of OP CBC SK-CZ 2007-2013 (number of operations)

---

Priority axis	Submitted operations (number)	Rejected operations (number)	Approved operations (number)	Certified operations (number)
1. Support of Social-Cultural and Economic Development of Cross-Border Region and Cooperation	347	222	125	50
2. Development of Accessibility of the Cross-Border Territory and Environment	183	140	43	9
3. Technical Assistance	7	0	7	0
<b>OP CBC SK-CZ</b>	<b>537</b>	<b>362</b>	<b>175</b>	<b>59</b>



# Implementation of OP CBC SK-CZ 2007-2013



Priority axis	EU Contribution 2007-2013 (mil. EUR)	Approved operations budget (mil. EUR)	Realised / declared expen- diture (mil. EUR)	Realised / declared expenditure (%)	Certified budget (%)
1. Support of Social- Cultural and Economic Development of Cross- Border Region and Cooperation	50,08	44,49	22,16	44,25	23,02
2. Development of Accessibility of the Cross-Border Territory and Environment	37,10	27,61	8,90	23,99	8,30
3. Technical Assistance	5,56	5,56	1,37	24,64	0
<b>OP CBC SK-CZ</b>	<b>92,74</b>	<b>77,57</b>	<b>32,44</b>	<b>34,98</b>	<b>15,75</b>

# The evaluation of preconditions and potential of municipalities in Trenčín Self-governing Region for CBC in programming period 2004-2006 (Case study)

---

Research was focused on the evaluation of individual factors:

- ❑ **Accessibility of the nearest border cross point** (factor F1)
- ❑ **Partner municipalities** (factor F2)
- ❑ **Experience with the application for grants** in Programs CBC 2004-2006 (factor F3)
- ❑ **Implementation of projects** under the CBC 2004-2006 (factor F4)
- ❑ **Programme Documents** of municipalities (factor F5)

# Research methods

---

- ❑ **Questionnaire survey** - focussed on determination of values for factors F2-F5
- ❑ **Method of expert evaluation** - the aim is the rank definition of factors F1-F6 according to opinions of 15 experts - government workers, experts with experience in cross-border cooperation, academics, students
- ❑ **Assignment of the importance to the factors (F1 to F6)** according to experts evaluation
- ❑ **Calculation of partial potentials of municipalities by factors F1 - F6 for CBC** - the points (empirical data obtained by questionnaire survey) were multiplied by a factor of importance
- ❑ **Evaluation of total potential for cross border cooperation in the municipalities** – total potential is based on the sum of partial potentials

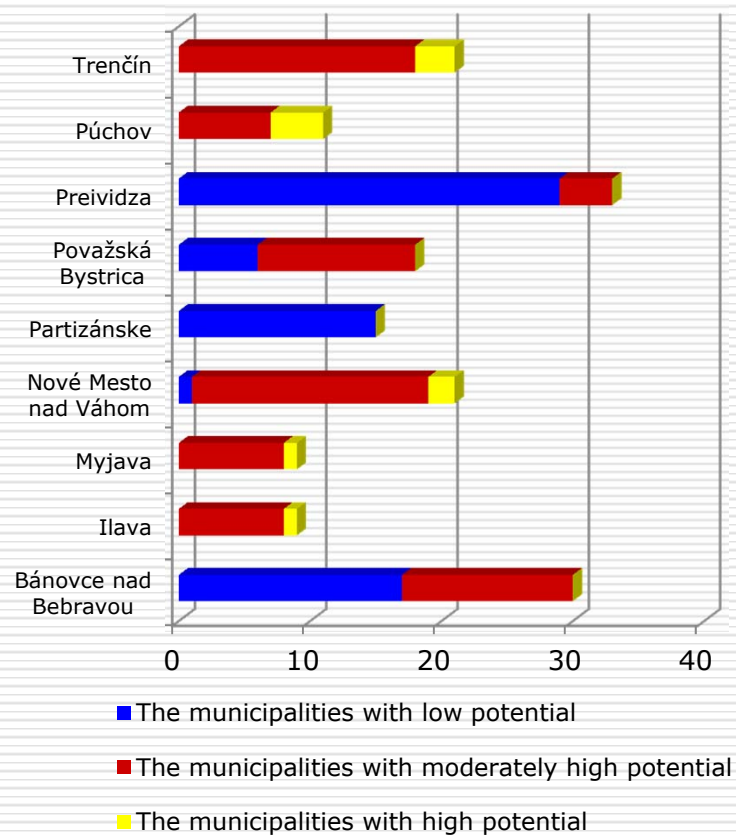
# Results

---

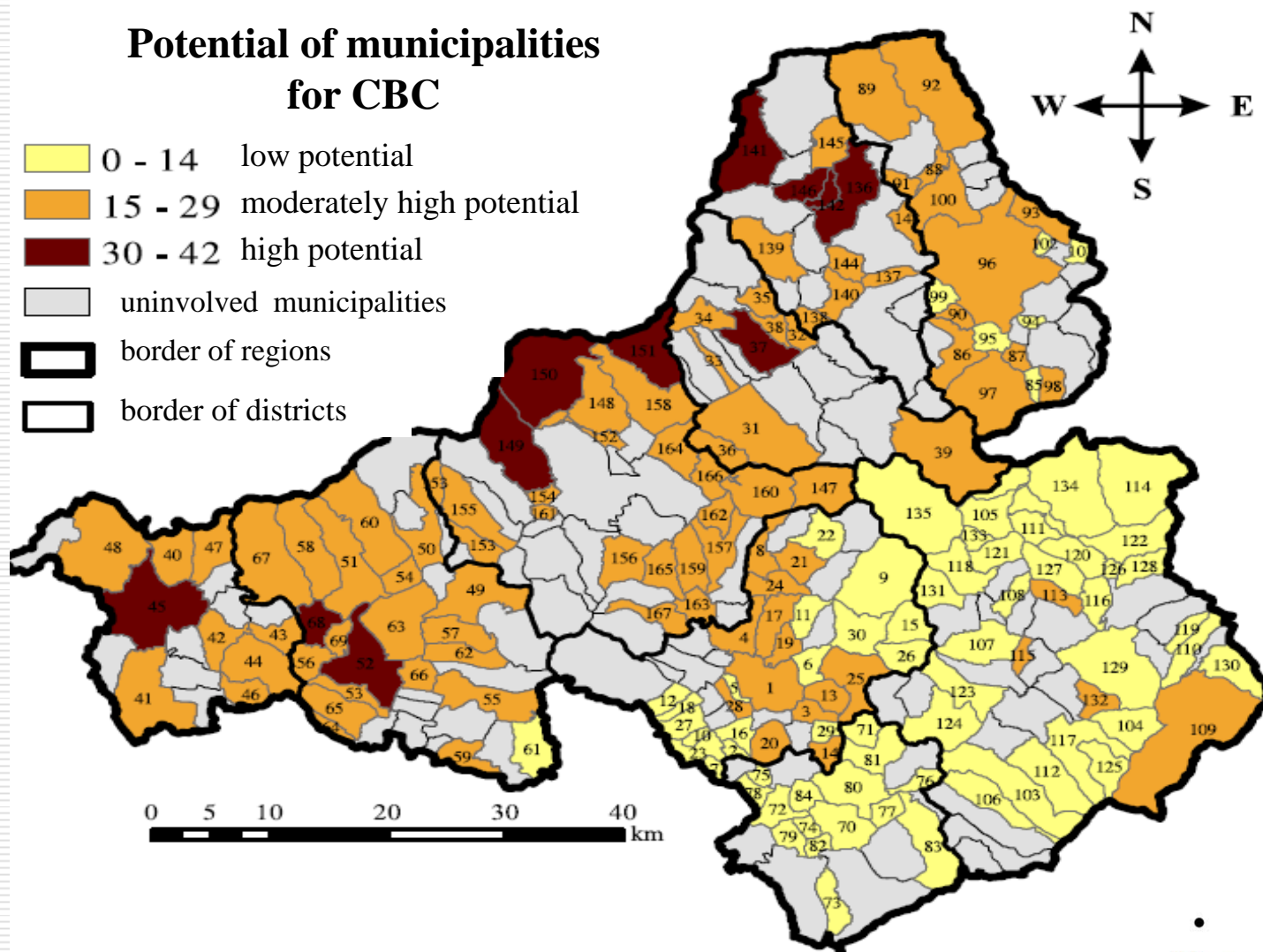
- ❑ In questionnaire survey there were involved 167 (60.5%) from 276 municipalities of Trenčín Self-governing region
- ❑ Paradoxically, in questionnaire survey participated fewer municipalities situated directly at the border as the municipalities situated at a further distance and with less favourable access to the border.
- ❑ Hierarchy of factors according to expert evaluation:
  1. Accessibility of the nearest border crossing (F1)
  2. Development Programme documents of municipality (F5)
  3. Partner municipalities (F2)
  4. Implementation of projects under the CBC Program 2004-2006 (F4)
  5. Experience with the application for grant in the CBC Program 2004-2006 (F3)

# Typology of municipalities of Trenčín Self-governing region according to potential for CBC

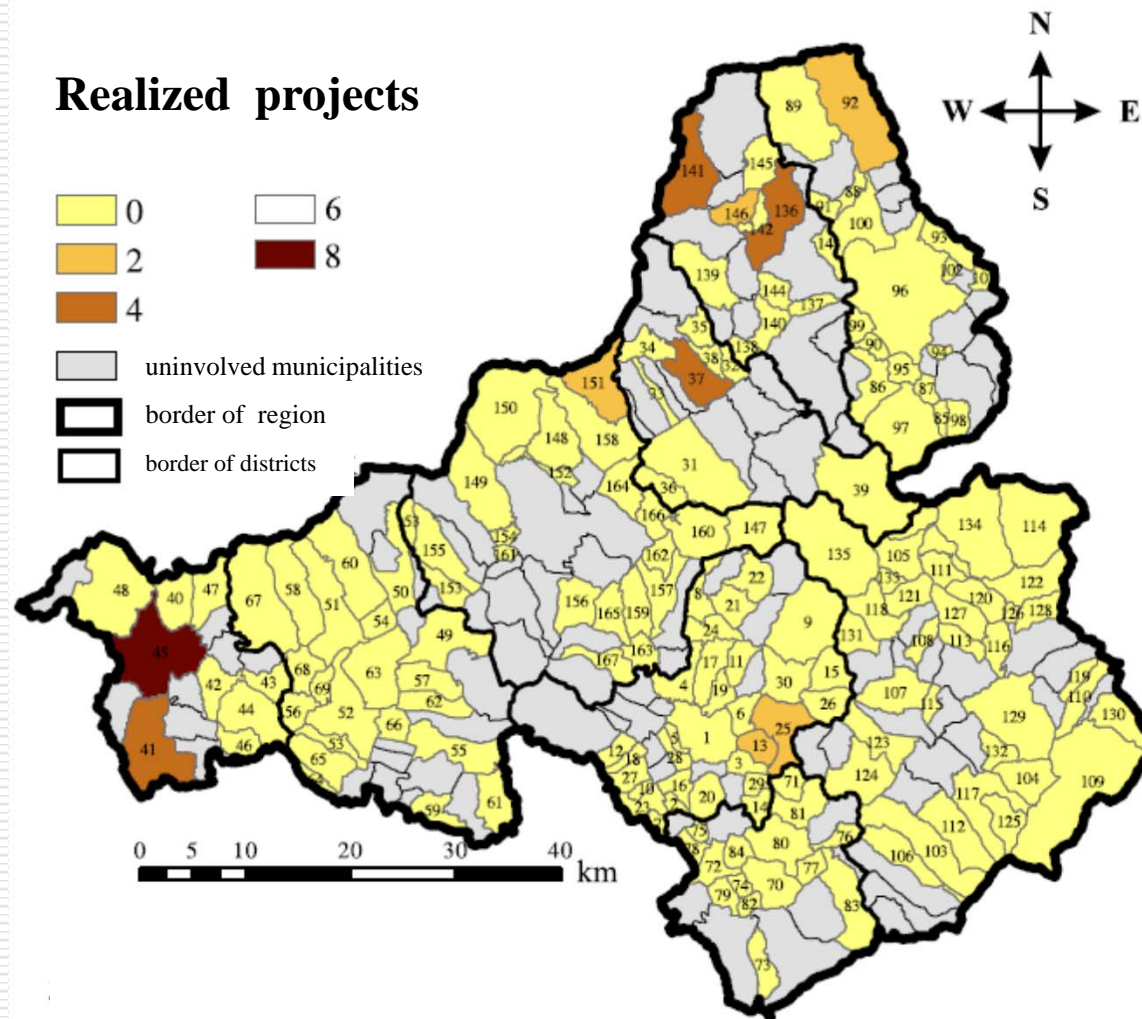
- The municipalities with low potential – 68 municipalities
- The municipalities with moderately high potential – 88 municipalities
- The municipalities with high potential - 11 municipalities



## Potential of municipalities for CBC



## Realized projects



# Conclusions

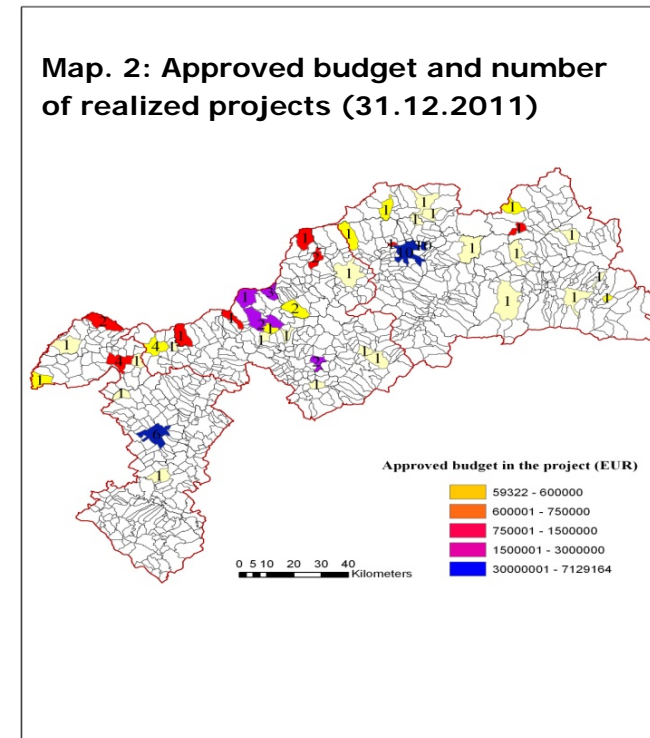
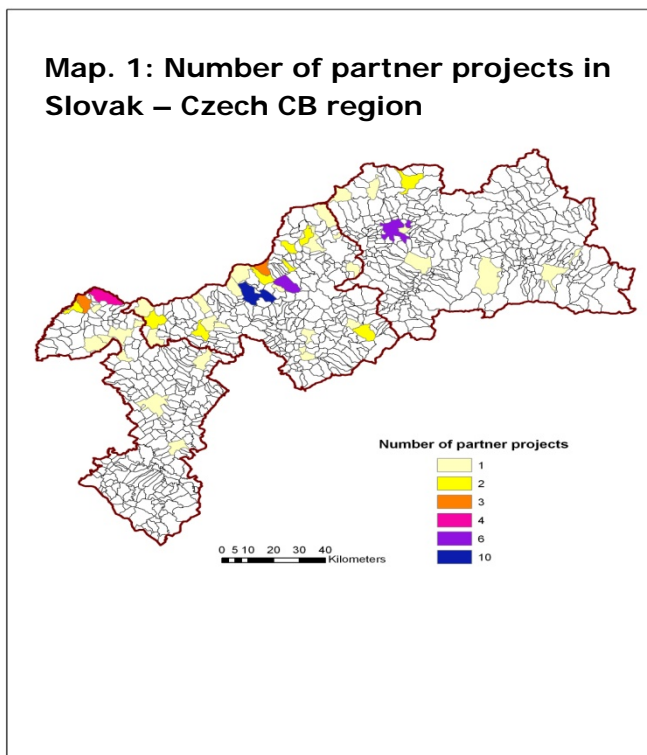
---

- ❑ The high number of municipalities is without partnership
- ❑ Lack of local government activities in networking and partnerships with municipalities in the Czech Republic
- ❑ Various interest of municipalities in submitting grant applications as a lead partner or partner of project



- ❑ Lack of experiences with grant applications and project implementation under the CBC programs
- ❑ Deficit budget for project co-financing
- ❑ Difficult project administration and implementation
- ❑ Negative influence has also long duration of partial and final verification of project activities and financial costs.

# CBC in Slovak-Czech cross-border region in Programming Period 2007 - 2013



Thanks for your attention

---

